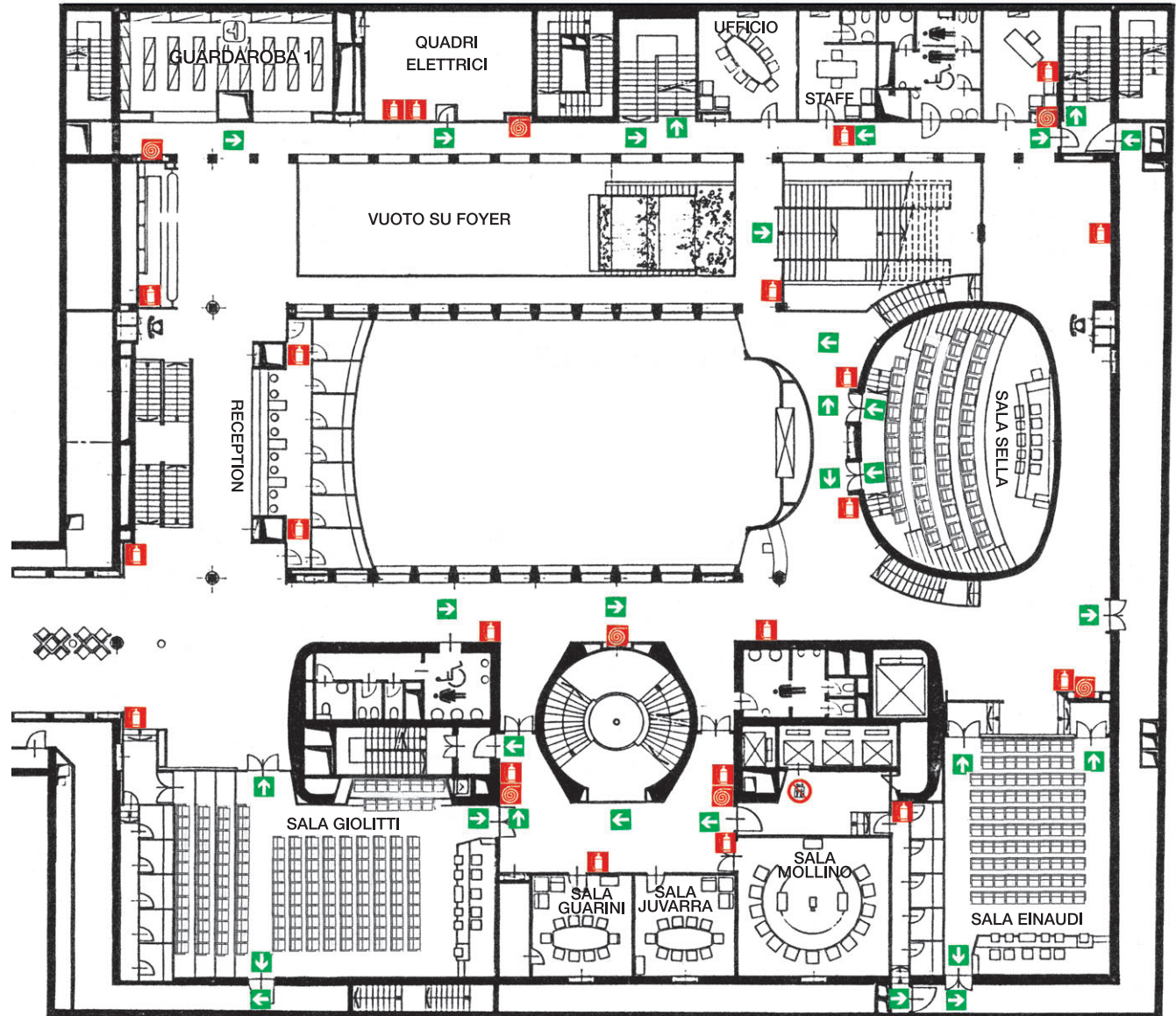


[Primo piano interrato > First underground floor]



Centro Congressi > Conference Centre



[Primo piano interrato]

L'ingresso principale a livello stradale, attraverso una rampa ellittica priva di barriere architettoniche, consente l'accesso pedonale al primo piano interrato, dove si trovano il banco reception, le sale Giolitti e Einaudi, l'ingresso superiore alla sala Sella, due salette commissioni, il centro slide, uno spazio bar ed un guardaroba. I due piani interrati sono collegati tra loro da scale, due ascensori montacarichi e una scala mobile.

[First underground floor]

The main entrance at street level leads over an oval ramp also accessible to disabled people to the first underground level where the reception desk, the Giolitti and Einaudi Halls, the upper entrance to the Sella hall, two committee rooms, the slide centre, a coffee bar area and a cloakroom are situated. Two elevators, an escalator and well appointed staircases grant easy access to the second underground floor.

